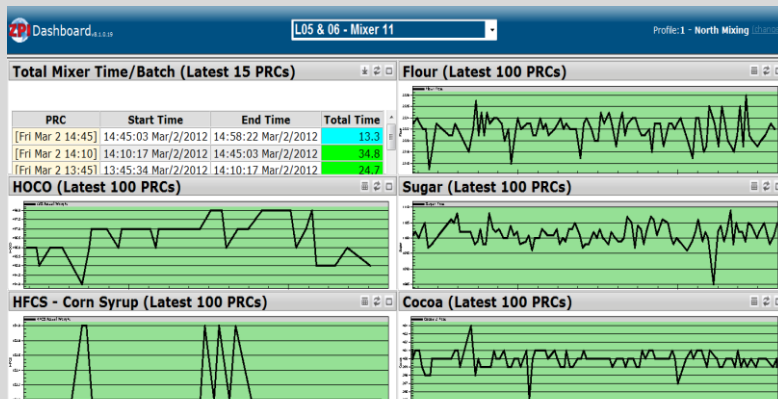


ZPI Data Enables Process Optimization to Dashboard Control (product weight)

Opportunity-Analysis

- Project focus was to reduce overweight product from an average of 2.5% to less than 1%
- Critical factors for controlling overweight product are currently unknown, GPS requires data to assess correlations of multiple machine and product input variables
 - ZPI introduced automated data collection points on 8 different input variables
 - Design of Experiments on critical input data against overweight data to determined optimal machine and material settings
 - Analyzed process variation to develop accurate and relevant running specifications



Improvements

- Allowable variation for key input variables is understood, measured, and displayed to the operator in a clear concise format
- Control plan run rules to control weight are displayed in a go-no-go dashboard



Breakthrough Results

- **Overweight reduced by 65 %**
- **Project duration 12 weeks**

